

Bridal Veil

Precious Metals and Base Metals

Key Elements

- Ideal location 10km East of Gander
- TCH runs through the property
- Old Rail bed runs through the property
- Power line runs through the property
- Excellent geology situated midway between Startrack and Queensway
- IP and Mag surveys completed indicating open ended untested anomalies
- Under the radar because no government reports have been done until now
- Government just completed a report on the property in its current research
- Room for a much larger land package

Bridal Veil and Abbotts Ridge are epigenetic, Cu–Ag ± Pb ± Au-mineralized, orogenic vein systems hosted in north-northeast- to west-southwest-striking ($\sim 260^\circ$), steeply dipping ($\sim 85^\circ$) dextral reverse oblique shear zones of inferred Acadian (Middle Devonian) age (H. Sandeman, pers. Comm., 2019)



Geological Survey
Department of
Natural Resources

GENERALIZED INTERPRETIVE MAP- NEWFOUNDLAND APPALACHIANS

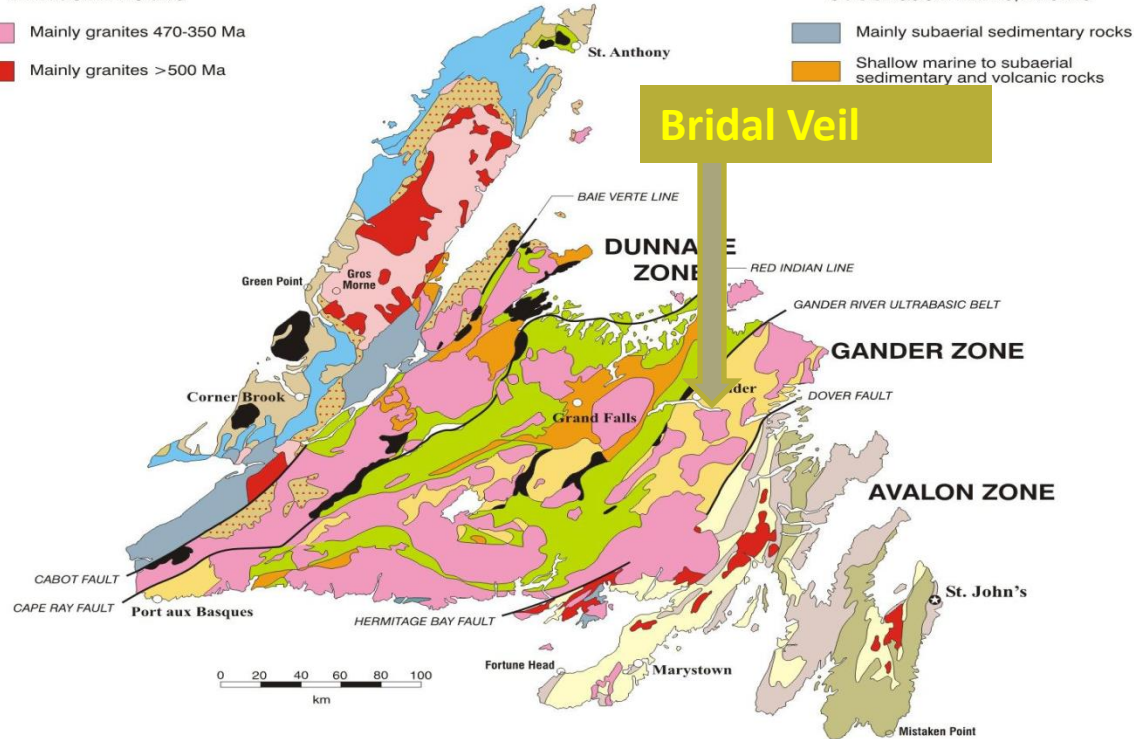
INTRUSIVE ROCKS

- Mainly granites 470-350 Ma
- Mainly granites >500 Ma

HUMBER ZONE

SUCCESSOR BELTS/BASINS

- Mainly subaerial sedimentary rocks
- Shallow marine to subaerial sedimentary and volcanic rocks



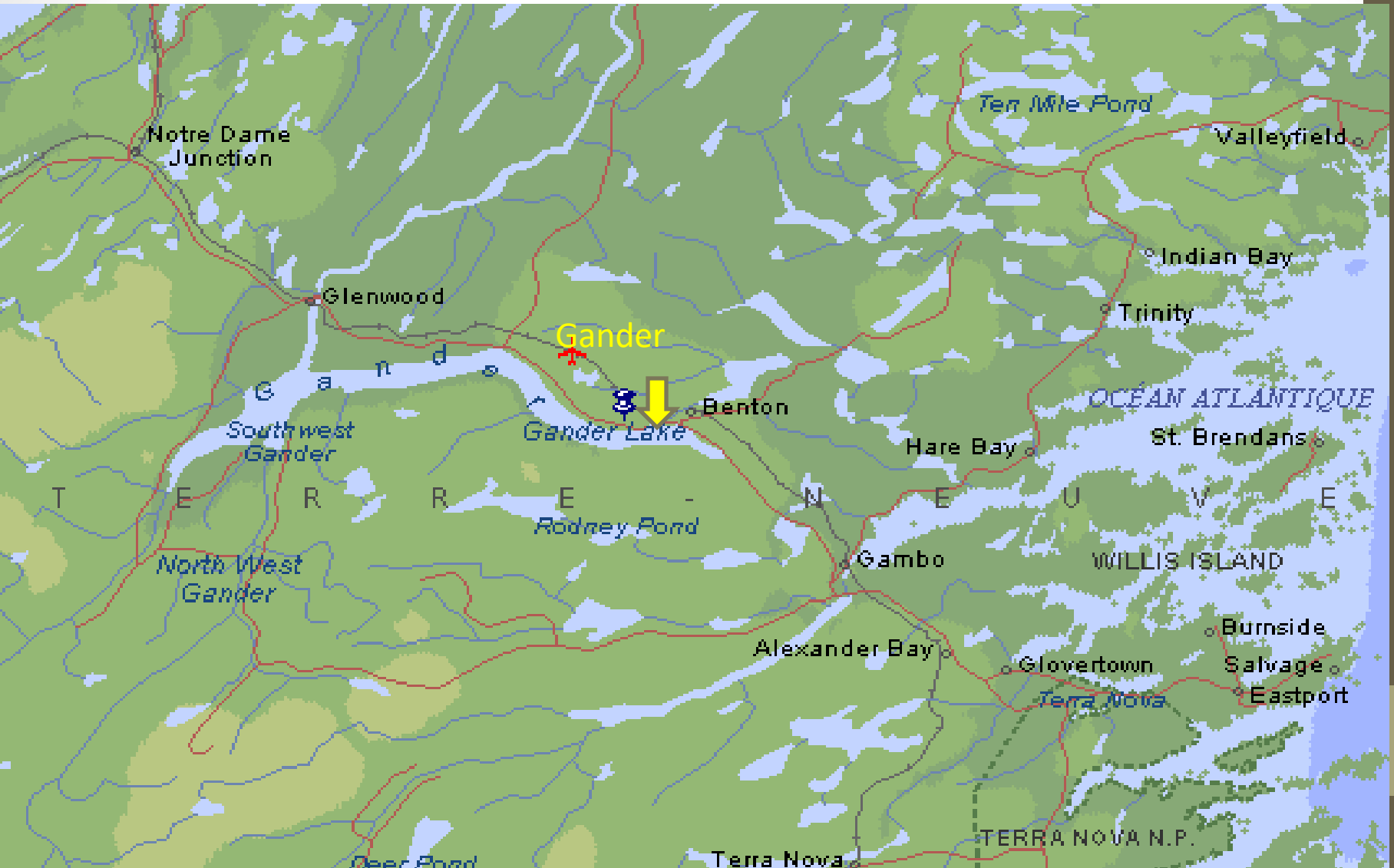
- ### HUMBER ZONE
- North American Iapetus Margin
- Transported slope/rise rocks
 - Shelf, passive margin
 - Rift rocks
 - Basement rocks

- ### DUNNAGE ZONE
- Vestiges of Iapetus
- Volcanic and sedimentary rocks
 - Oceanic crust/mantle

- ### GANDER ZONE
- Eastern Iapetus Margin
- Sandstones and metamorphic rocks

- ### AVALON ZONE
- African Suspect Terrane
- Mainly subaerial sedimentary rocks
 - Marine sedimentary rocks
 - Volcanic rocks

Ideal Location

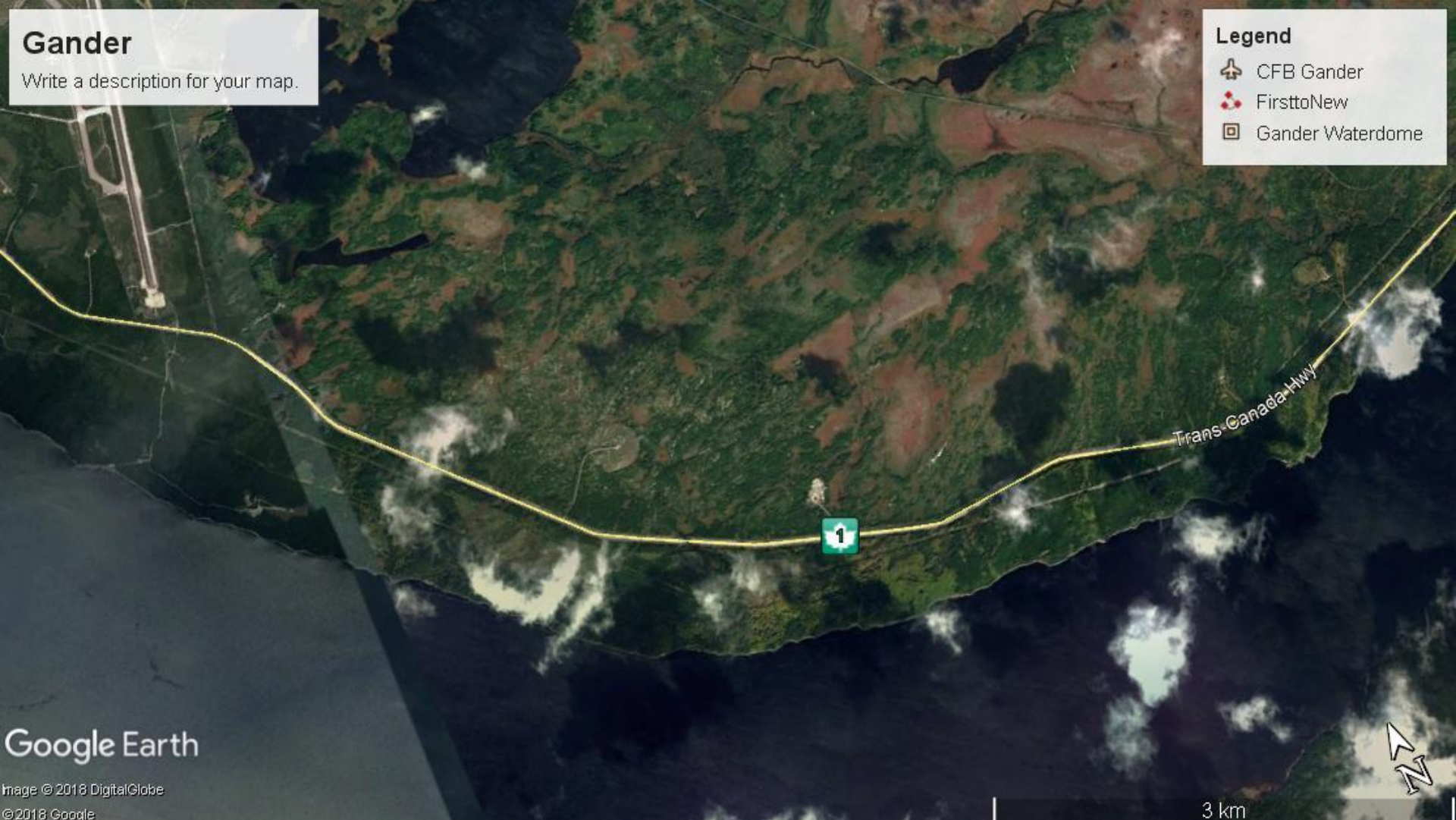


Gander

Write a description for your map.

Legend

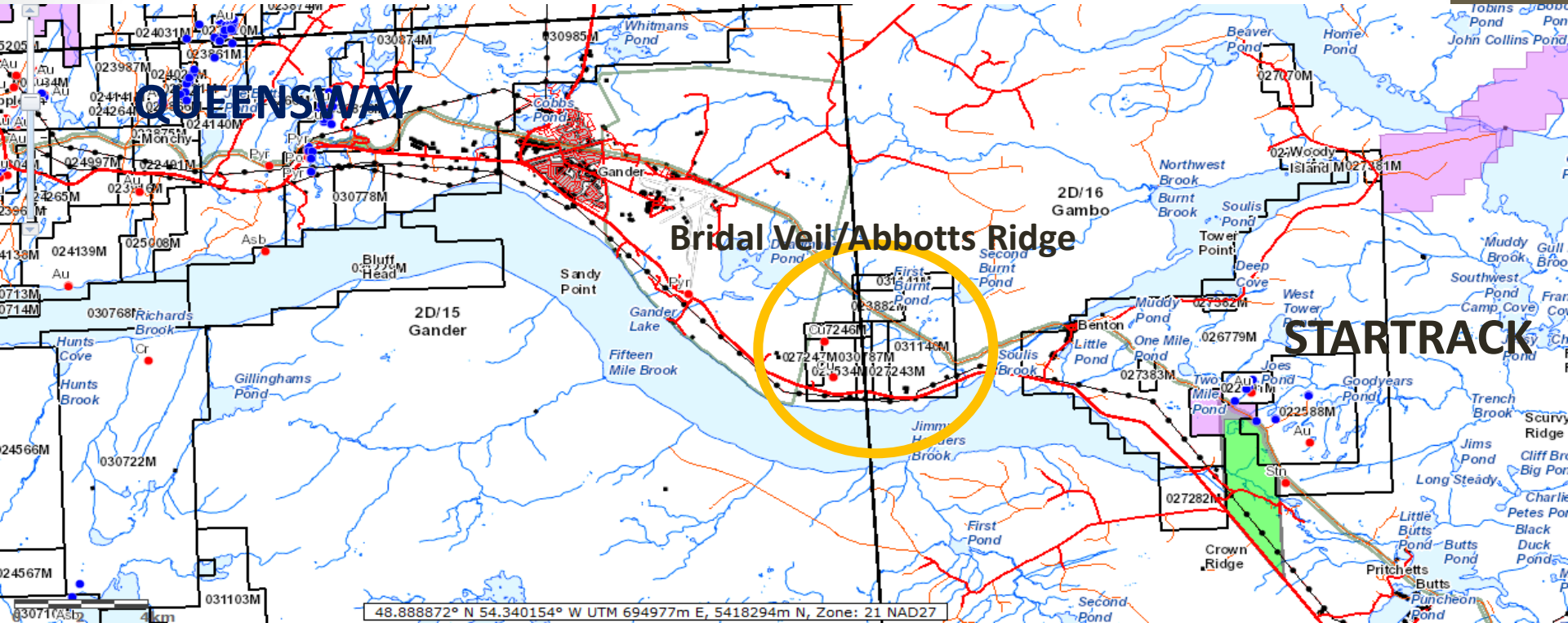
-  CFB Gander
-  FirsttoNew
-  Gander Waterdome



Google Earth

Image © 2018 DigitalGlobe
© 2018 Google

3 km



Au 0.63g/t Cu 1.74% Pb 8.40% Ag 7.80 oz./t

Megan's Rise



Mineralized outcrops over 15 sq. Km.

Huge Unexplored Anomalies

Cu 2.80% Pb 5.60% Ag 5.60 oz/t

Bog



Au 0.16g/t Cu 8.50% Ag 1.82oz./t Pb 1.00%

Abbott's Ridge



Au 3.8g/t Cu 1.1% Pb 3.20% Ag 5.40oz/t

Au 0.75g/t Cu 4.60% Pb 5.20% Ag 1.08oz/t

Hidden Outcrop



Bridal Veil



South BV

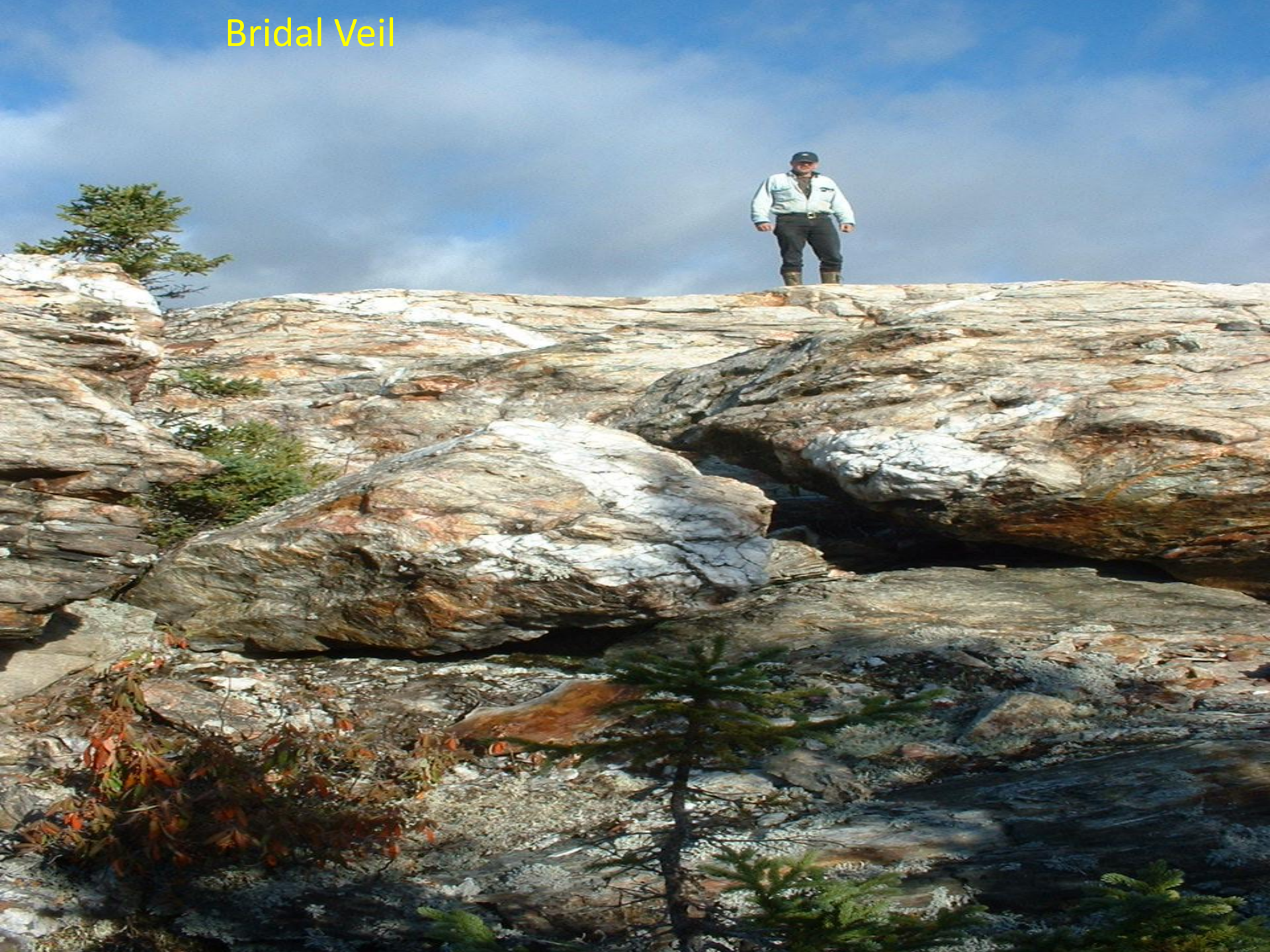
Au 0.46g/t 2.2 Cu 2.2%



Image © 2010 GeoEye
© 2010 Google
© 2010 Cnes/Spot Image
Image © 2010 DigitalGlobe

©2010 Google

Bridal Veil



Bridal Veil



Bridal Veil

East

200m



Bridal Veil



West



300m



Location of sample on display

Bridal Veil



700m

Abbott's Ridge



A photograph of a rocky ridge with layered rock formations and scattered debris. The rock shows distinct horizontal bedding and is colored in shades of grey, brown, and reddish-orange. The foreground is covered with loose rock fragments and small pieces of debris. The background shows a steep, vegetated slope with dry grass and some green plants.

Abbott's Ridge



New outcrop

Used our new jackhammer . See results next slide

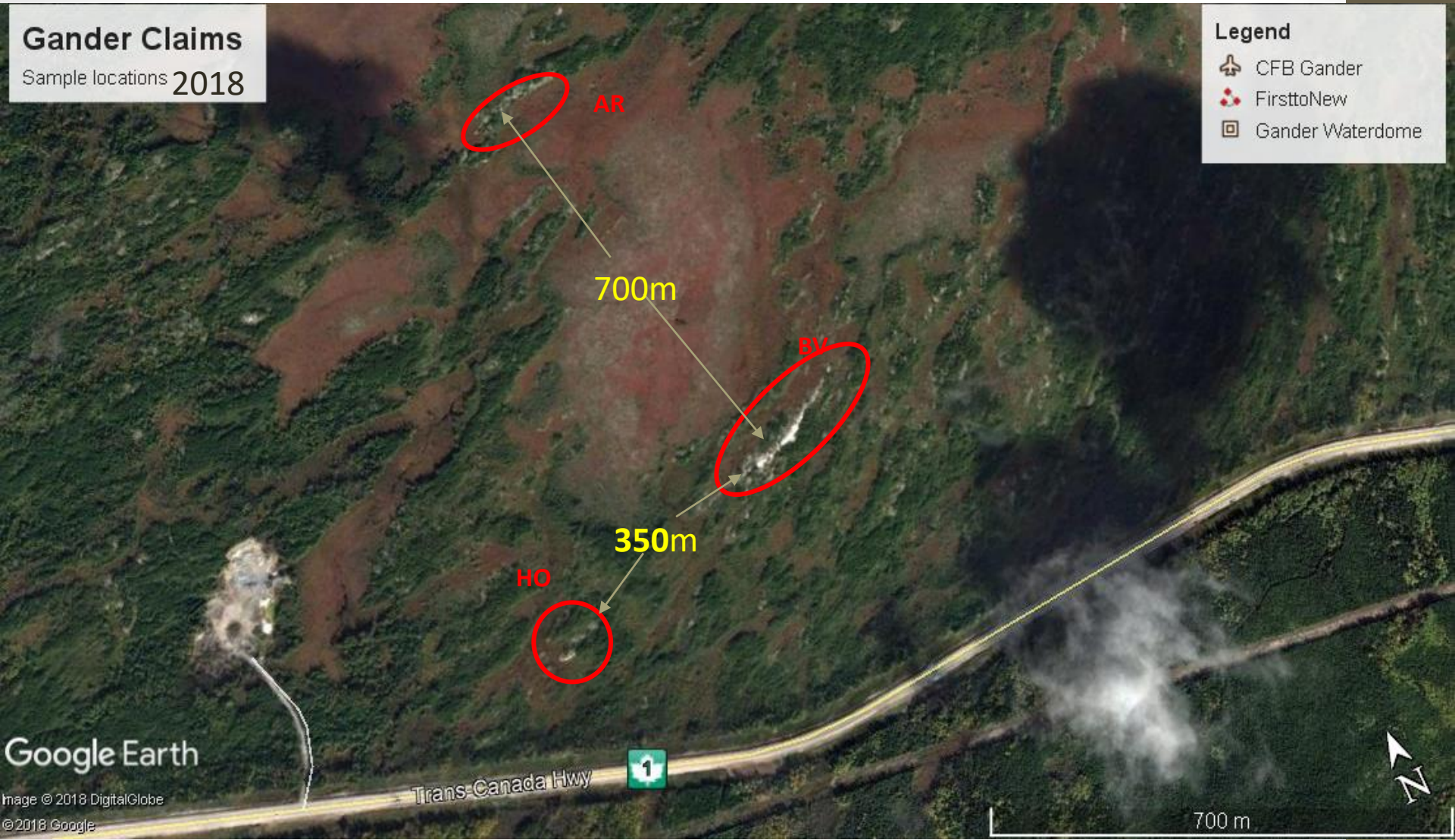


Gander Claims

Sample locations 2018

Legend

- ✈ CFB Gander
- 🔴 FirsttoNew
- 📍 Gander Waterdome



Mag Survey

